

vapordry® sa

cedar breather®

accessories

# SELF-ADHERED ROOF UNDERLAYMENT

## installation instructions



# ROOF PROTECTION SYSTEM INSTALLATION INSTRUCTIONS

vapordry® sa

cedar breather®

accessories

## PREINSTALLATION CONSIDERATIONS

VaporDry SA can be installed in temperatures down to 25°F when stored in a conditioned space at 40°F or above.

Prepare the roof sheathing to be free of dust and debris. Cleaning with a push broom or air compressor is recommended.

VaporDry® SA is a self-adhered product and does not require any fasteners during installation. Staples/cap-fasteners may be used to temporarily fasten as you roll out each course.

The continuous acrylic adhesive can be repositioned on roof sheathing to verify a smooth installation with minimal wrinkles.

VaporDry® SA should be installed shingle lap fashion (ie. begin at the base of the roof assembly).

VaporDry® SA must be installed 12 inches up the vertical wall at all roof-to-wall intersections.

Overlap all horizontal seams by at least 4 inches, all vertical seams by at least 6 inches, and corners by 12 inches.

You must use firm and even pressure when applying VaporDry® SA to activate the adhesive. To apply even pressure, we recommend using the following: a floor squeegee, floor roller, firm push broom, or a larger hand applicator.



Flash roof penetrations (vent pipes, skylights, exhaust vents, etc.) with proper shingling technique to maintain drainage to the exterior.

Flash penetrations according to building code requirements. Surface should be clean and dry. All self-adhered flashing must be adhered using a hand applicator. HydroFlash® should be stored inside or in a conditioned space (above 40°F) prior to installing in cold temperatures.

Tape all tears and holes that may have been inadvertently introduced during the construction process.

Reduce excess foot traffic on product as the grey surface can be damaged.

High temperature self-adhered underlayment: 250°F service temp.

Follow local fall protection and safety standards when walking on product, as surface may become slippery when wet.

VaporDry® SA complies with ASTM D1970 for nail sealability. Check with local building codes for use as ice dam protection in cold climates.

# ROOF PROTECTION SYSTEM INSTALLATION INSTRUCTIONS

vapordry® sa

cedar breather®

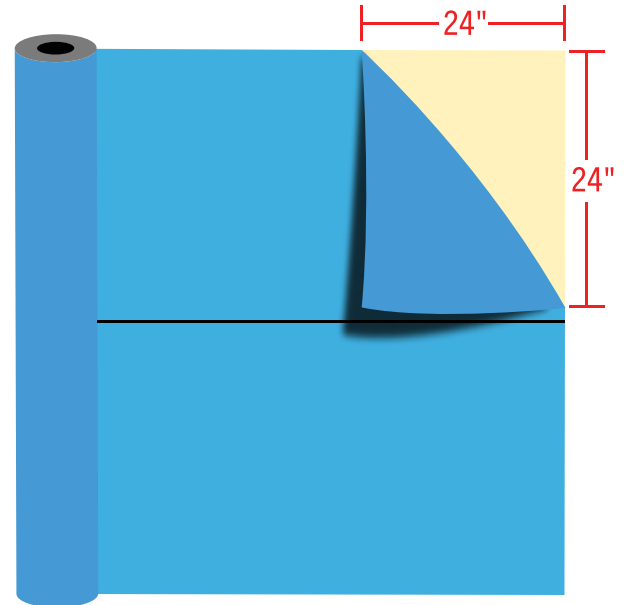
accessories

## VAPORDRY SA INSTALLATION

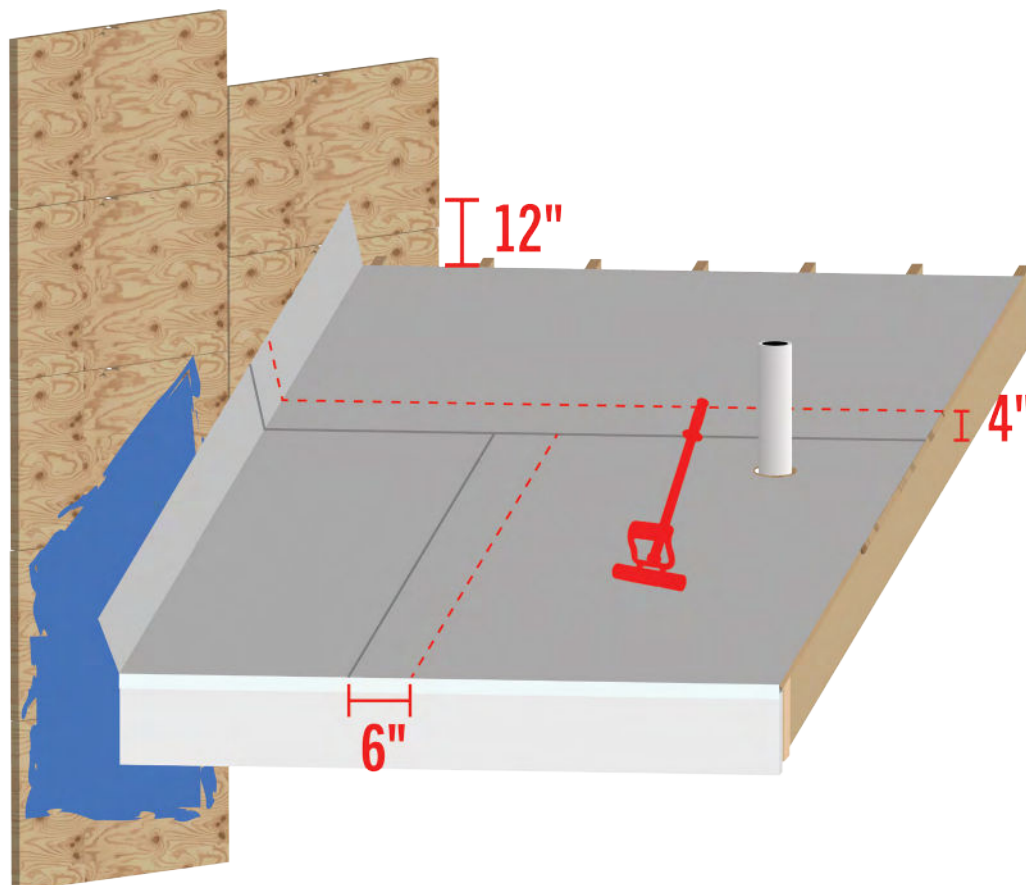
Using a chalk line, establish a “control line” to use as a guide for the top edge of the first courses of VaporDry® SA. Follow this control line as you install the first course to minimize wrinkles and ensure maximum contact with the decking.

Starting from the upper corner of the top half of the split release liner, peel 24 inches of the liner to expose the adhesive. Place the exposed adhesive corner to the edge of the “control line” to install the first course. **OPTION:** you may fasten the exposed corner with a staple or cap fastener to hold in place as you continue with the next step.

Once the corner is firmly in place, pull the rest of the top half of the release liner at a 45° angle as you work to unroll the wrap along the wall. Verify alignment and begin to smooth starting from the center of VaporDry SA and work to the edges. Adhesive can be repositioned on the sheathing to verify maximum contact and reduce wrinkles and air pockets.



BACK OF VaporDry SA



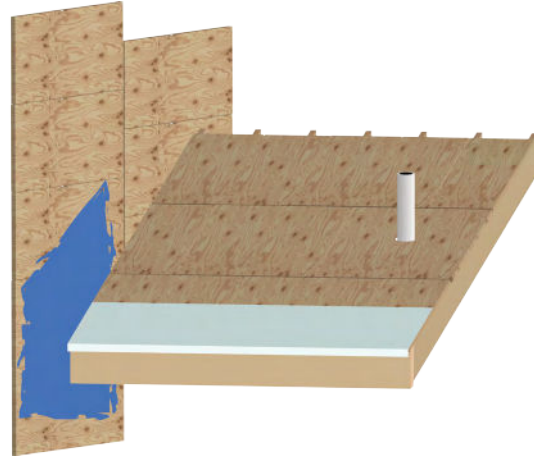
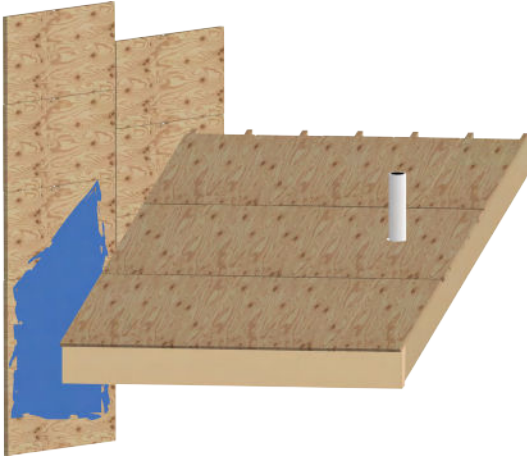
# ROOF PROTECTION SYSTEM INSTALLATION INSTRUCTIONS

vapordry® sa

cedar breather®

accessories

## VAPORDRY SA INSTALLATION



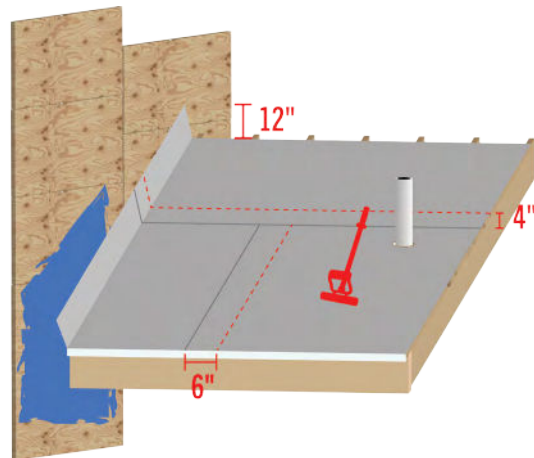
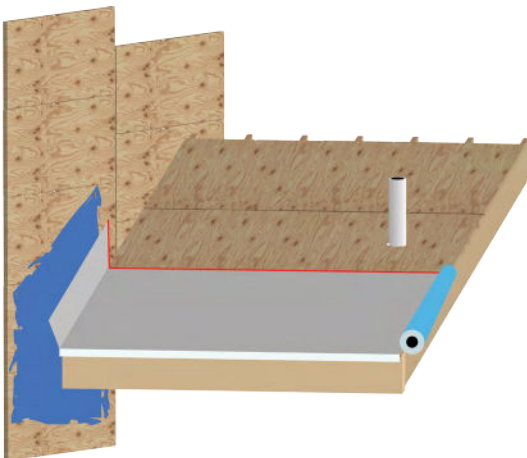
Apply HydroFlash LA or UV+ where the bottom of the roof meets the wall; between the wall sheathing and subfascia. HydroFlash LA should be installed about 4 inches below the subfascia.

Install metal drip edge at the eaves prior to applying VaporDry SA.

Chalk a control line on the roof sheathing to help prevent wrinkles for horizontal installation.

Repeat the same steps for consecutive courses, shingling over as you work up the roof. Overlap requirements are as follows: horizontal overlaps 4 inches, vertical overlaps 6 inches, and 12 inches up the vertical wall at all roof-to-wall intersections.

Ensure VaporDry SA overlaps the metal drip edge at the eaves.



**PRESSURE MUST BE APPLIED TO THE ENTIRE SURFACE TO ACTIVATE THE ADHESIVE.**

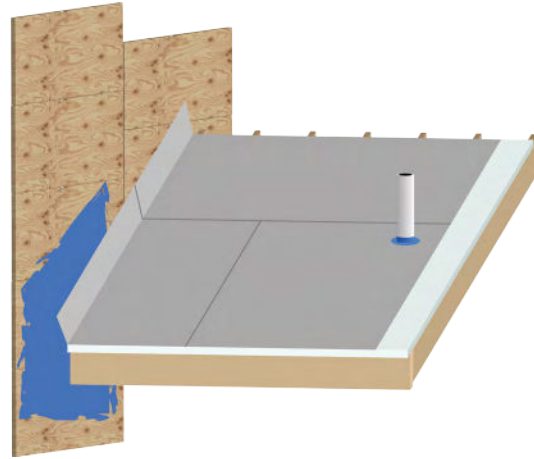
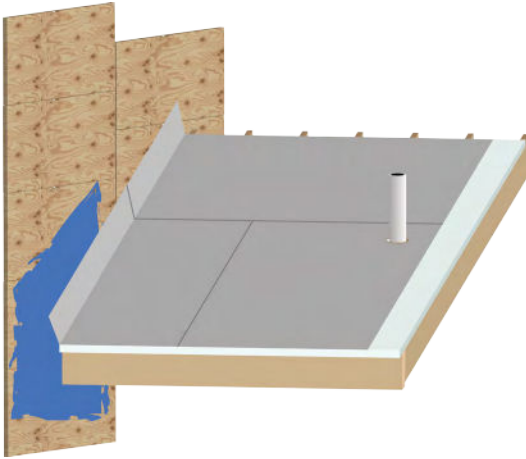
# ROOF PROTECTION SYSTEM INSTALLATION INSTRUCTIONS

vapordry® sa

cedar breather®

accessories

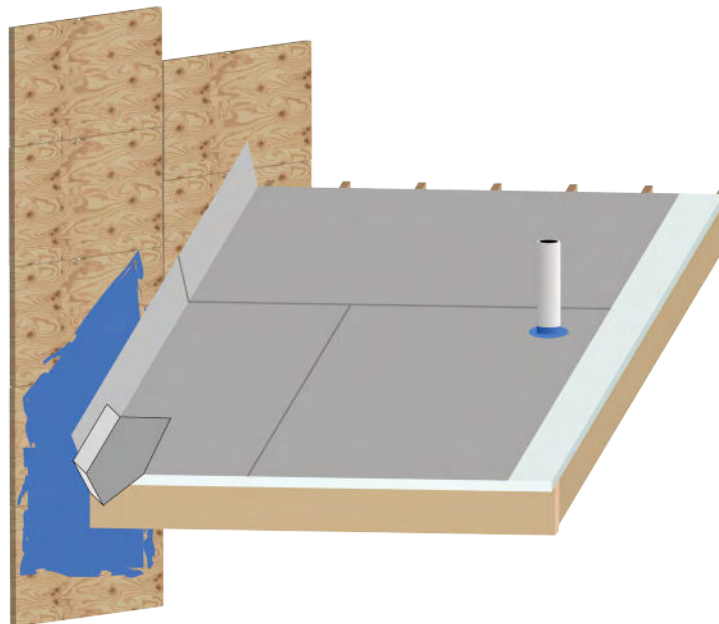
## VAPORDRY SA INSTALLATION



Install metal drip edges along the rakes prior to installing roof covering.

All pipe and duct penetrations through VaporDry SA, must be sealed with HydroFlash UV+ or LA.

Install metal kickout flashing where the bottom of the roof meets the wall sheathing.



**REDUCE EXCESS FOOT TRAFFIC ON VAPORDRY SA, AS THE GREY SURFACE CAN BE DAMAGED.**

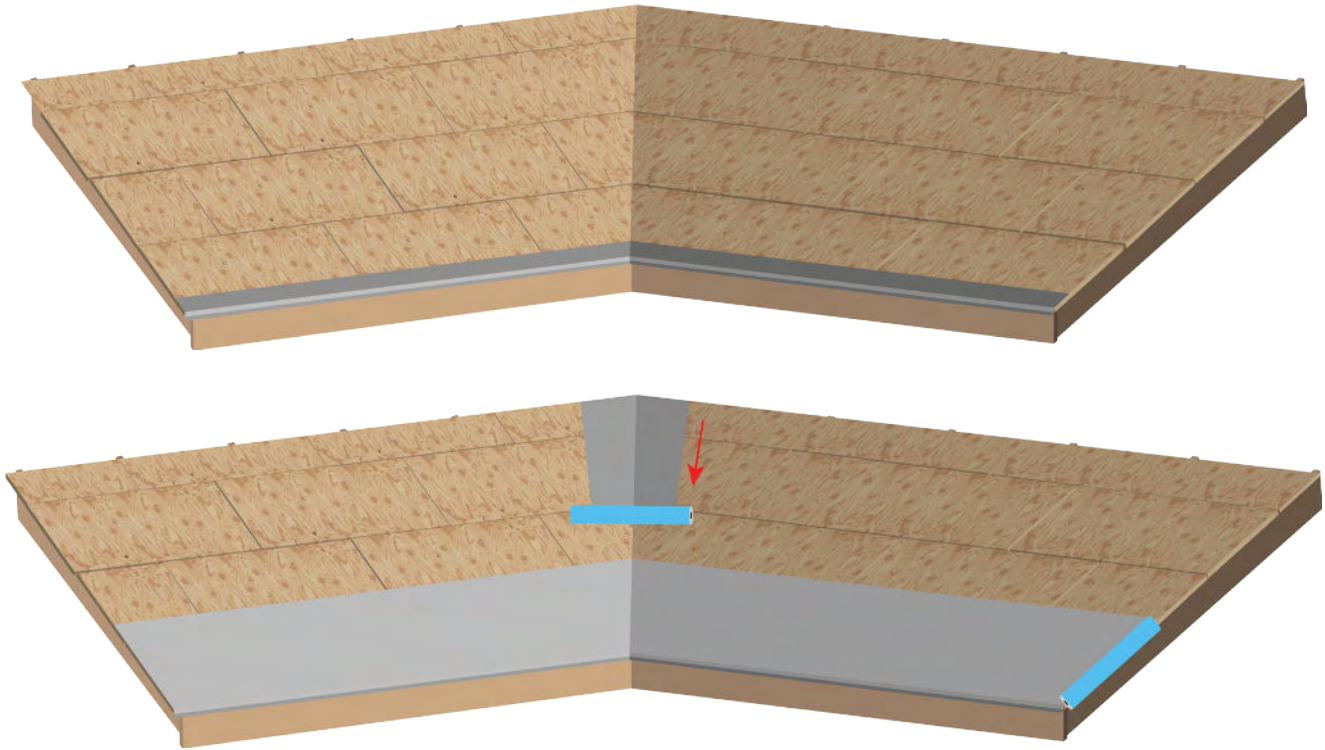
# ROOF PROTECTION SYSTEM INSTALLATION INSTRUCTIONS

vapordry® sa

cedar breather®

accessories

## VALLEY INSTALLATION

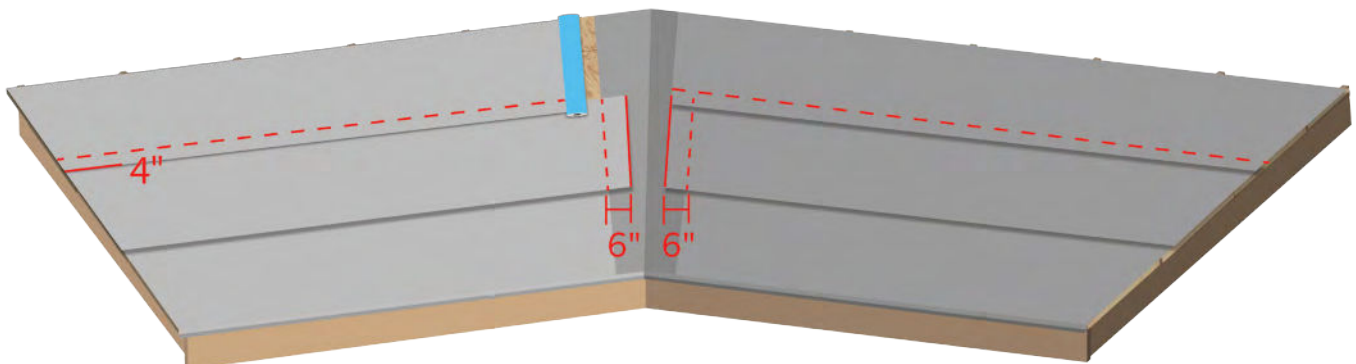


Install metal drip edge at the eaves prior to applying VaporDry SA.

Install first course of VaporDry SA parallel to the eaves, overlapping the metal drip edge.

Beginning at the top of the valley, center VaporDry SA in the valley and roll downward, overlapping the course of VaporDry SA installed at the eaves.

Install subsequent courses of VaporDry SA parallel to the eaves, overlapping the course below by 4 inches and terminating with a minimum 6 inch overlap with the vertical courses installed in the valley





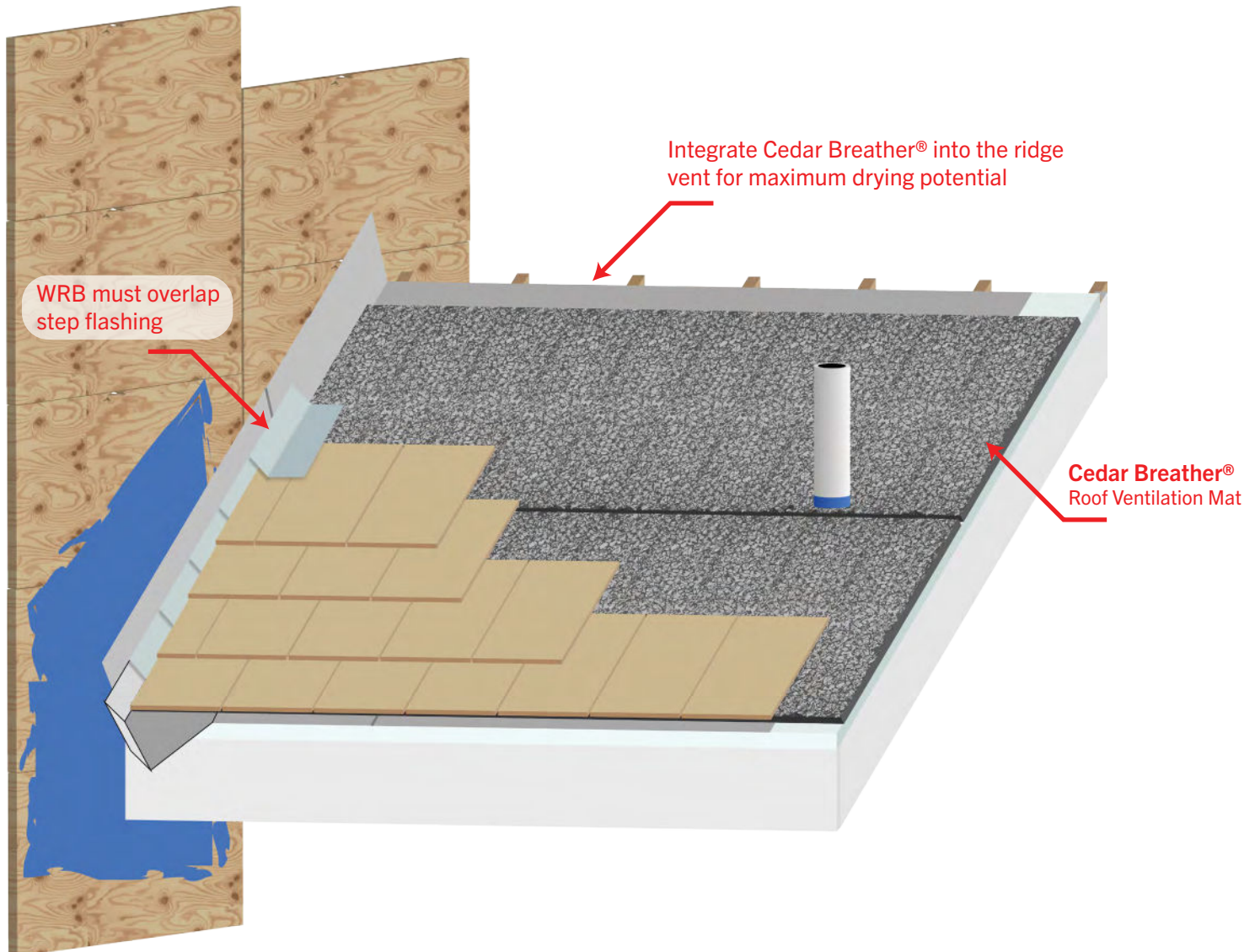
# ROOF PROTECTION SYSTEM INSTALLATION INSTRUCTIONS

vapordry® sa

cedar breather®

accessories

## CEDAR SHINGLE INSTALLATION





# ROOF PROTECTION SYSTEM INSTALLATION INSTRUCTIONS

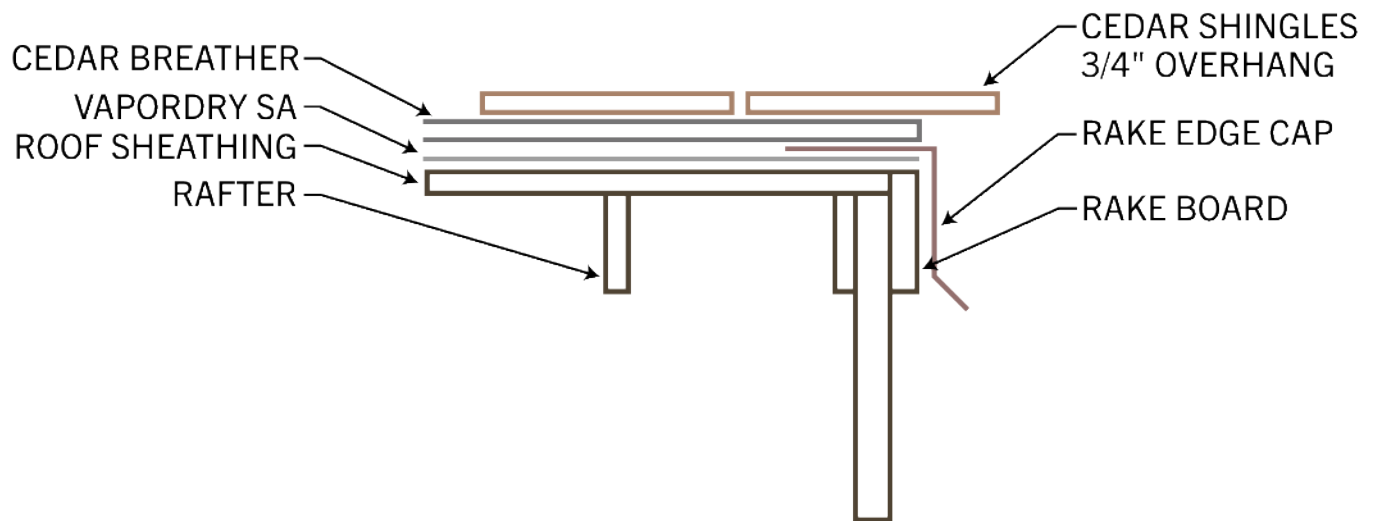
vapordry® sa

cedar breather®

accessories

## RAKE & EAVE DETAIL

### RAKE



### DRIP EDGE

