



HALO®

ADVANCED GRAPHITE INSULATION SYSTEM

Powered by
High R-Value GPS
Technology



Make the Switch to Today's Most Advanced Graphite Insulation System!

Halo® offers a breakthrough graphite insulation system that is perfectly designed for three customized applications

EXTERRA®
ADVANCED BREATHABLE
EXTERIOR
INSULATING SHEATHING

SUBTERRA®
ADVANCED
BELOW-GROUND
RIGID INSULATION

INTERRA®
ADVANCED REFLECTIVE
INTERIOR
RIGID INSULATION

[BUILDWITHHALO.COM](https://buildwithhalo.com)

© Copyright Logix Brands Ltd. 2023 All rights reserved.

No part of the work contained herein as covered by this copyright may be reproduced or used in any form, or any means – graphic, electronic or mechanical, including without limitation photocopying. By using these products, you agree to assume all risks associated therewith. See LogixBrands.com/Disclaimer-General for a full copy of disclaimer.

MADE OF
Graphite Polystyrene





DESIGNED FOR EXTERIOR APPLICATIONS

- Halo® GPS (graphite polystyrene) delivers a long-term R-4.7 per inch.
- Continuous GPS insulation creates a thermal break
- Perforated laminate allows vapor to escape the wall assembly
- It's breathable — walls stay dry and healthy
- Built-in water-resistive barrier*
- Water is kept to the exterior

* When seams, fasteners and edges are taped and/or sealed (see the Halo® Installation Guide).



DESIGNED FOR BELOW-GROUND APPLICATIONS

- Halo® GPS (graphite polystyrene) delivers a long-term R-4.7 per inch.
- Available with a thick polypropylene laminate or an extra-tough cross-woven laminate (Subterra® Plus)
- Per the NRC's Radon Diffusion test, Subterra Plus is a radon barrier with 7 times higher radon resistance than 6 mil polyethylene membranes.
- Continuous GPS insulation creates a thermal break
- Protects waterproofing
- Exterior laminate helps drain water away from the foundation wall
- It's job site tough — withstands severe foot and equipment traffic without breaking
- Built-in water-resistive barrier*

* When seams, fasteners and edges are taped and/or sealed (see the Halo® Installation Guide).

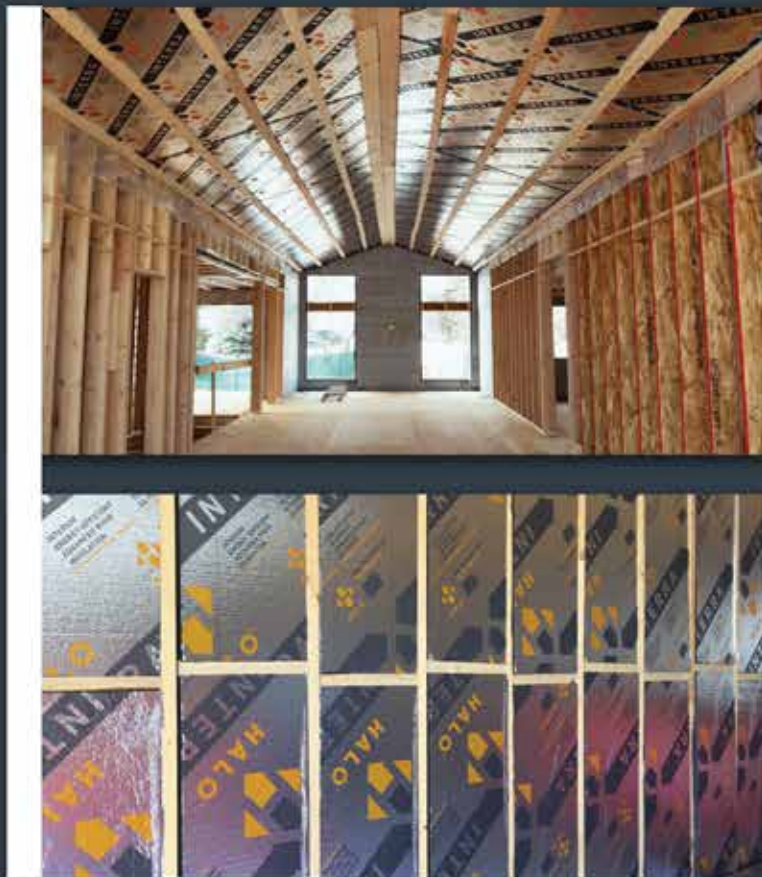




DESIGNED FOR INTERIOR APPLICATIONS

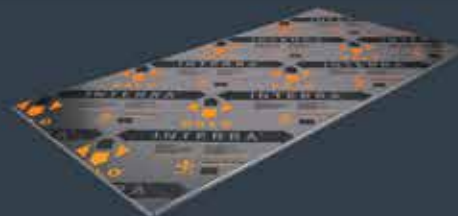
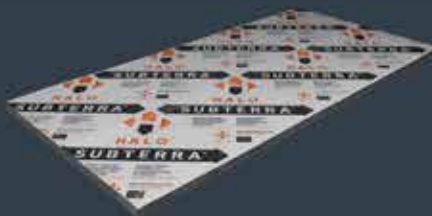
- Halo® GPS (graphite polystyrene) delivers a long-term R-4.7 per inch.
- Continuous GPS insulation creates a thermal break
- Built-in vapor barrier*
- Reflective laminate reflects heat back into the home or building**
- Interra® FR is now regionally available and is specially formulated to not require a thermal or ignition barrier (in the USA only) when installed on any interior wall surface.***

* When seams, fasteners and edges are taped and/or sealed (see the Halo® Installation Guide). **When an appropriate air space is provided. ***Provided Type XI Halo® Interra® FR is installed at a maximum thickness of 2.28". Based on testing to NFPA 286 in accordance with IBC 2015, Section 2603.9 and IRC 2015, Section 316.6. (Not available in all regions)



ZERO THERMAL DRIFT. ZERO COMPROMISE.

- Graphite Polystyrene (GPS) provides R-4.7 per inch.
- GPS provides a permanent long-term R-value and won't deteriorate over time like XPS and ISO.
- GPS delivers greater R-values at lower outside temperatures.
- Minimizes the energy loss from thermal bridging.
- Light yet durable — perfect for today's demanding jobsites.
- Superior indoor air quality due to Halo®'s clean steam-fused GPS core.
- GPS is 100% recyclable and ozone layer-friendly — no CFCs or HCFCs.



BUILDWITHHALO.COM



An innovation in insulation. Right to the very core.

Graphite Polystyrene (GPS) is the new standard in thermal insulation, thanks to millions of graphite infrared absorbers and heat reflectors that reduce thermal conductivity.

SPECIFICATIONS

Halo® Product	Board Size ^{4,5}	Standard R-values ²	Board Thicknesses ^{1,4}	Compressive Resistance ³ psi(KPa)
EXTERRA®	4' x 8', 9', 10' 1230mm x 2460mm, 2770mm, 3075 mm	R-3 R-5 R-7.5 R-10	5/8" (16MM) 1-1/16" (27MM) 1-5/8" (41MM) 2-1/8" (54MM)	10 (70)
SUBTERRA® (with polypropylene laminate)	4' x 8' 1230mm x 2460mm	R-5 R-7.5 R-10	1-1/16" (27MM) 1-5/8" (41MM) 2-1/8" (54MM)	16 (110) / 20 (140) / 25 (172) / 30 (210) / 40 (276)
SUBTERRA® PLUS® (with cross-woven laminate)	4' x 8' 1230mm x 2460mm	R-5 R-7.5 R-10	1-1/16" (27MM) 1-5/8" (41MM) 2-1/8" (54MM)	16 (110) / 20 (140) / 25 (172) / 30 (210) / 40 (276)
INTERRA®	4' x 8', 9', 10' 1230mm x 2460mm, 2770mm, 3075 mm	R-3 R-5 R-7.5 R-10	5/8" (16MM) 1-1/16" (27MM) 1-5/8" (41MM) 2-1/8" (54MM)	10 (70)
INTERRA® FR®	4' x 8', 9', 10' 1230mm x 2460mm, 2770mm, 3075 mm	R-3 R-5 R-7.5 R-10	5/8" (16MM) 1-1/16" (27MM) 1-5/8" (41MM) 2-1/8" (54MM)	5 (35)

¹ Custom thicknesses and compressive strengths are available upon request. Please contact your local Halo® dealer or representative. ² Typically, XPS and ISO insulation products are not guaranteed to maintain their published R-values over time. Halo® meets or exceeds most XPS-guaranteed R-values (check the guaranteed R-value with your XPS supplier). ³ Listed compression values are minimum requirements conforming to ASTM C578 and CAN/ULC S701. Halo® products meet or exceed the requirements of ASTM C578, "Standard Specification for Rigid, Cellular Polystyrene Thermal Insulation", and CAN/ULC S701, "Expanded Polystyrene Insulation Board and Pipe Covering". ⁴ The dimensional tolerances for the length, width and thickness of a 4' W x 8' L x 5" (max thickness) Halo board is +/- 1/4", +/- 1/4", +/- 1/16", respectively. ⁵ 9' and 10' lengths available on a custom order basis. ⁶ This product is Regionally Available (see product website for availability)

HALO PACKAGING

Standard Bundle Size: 4' wide x 8' long x 1" deep	
Board Thickness	No. of Boards/Bundle
5/8"	20
1-1/16"	12
1-5/8"	8
2-1/8"	6

Installation Instructions: Please refer to the Halo® Installation Guide at BuildWithHalo.com or from your local Halo® dealer or representative.

**ZERO THERMAL
DRIFT**

DEMYSTIFYING R-VALUE (@ 1" THICKNESS FOAM)

HALO PROVIDES HIGHER GUARANTEED R-VALUE THAN XPS	HALO (GPS)	Extruded Polystyrene (XPS)
Stated R-value	4.7 ¹	5.0
Expected Long Term R-value	4.7	4.7
Guaranteed R-value	4.7	4.5

All R-values tested at 24 deg C/75 deg F. Note: foam insulation products tested at lower temperatures generate higher R-values.

¹ R-4.7/inch can be otherwise expressed as R-5 Per 1 1/16" (nominal inch)

FOR MORE INFORMATION

Visit BuildWithHalo.com. • Call the Halo® hotline at 855.350.HALO (4256). • Call your local Halo® manufacturer below.

AMC Foam Technologies Inc.
35 Headingley Rd.
Headingley, MB
R4H 0A8
877.789.7622

Beaver Plastics Ltd.
11581-272 St.
Acheson, AB
T7X 6E9
#215-44393 Simpson Rd.
Chilliwack BC
V2R 5M3
888.453.5961

Progressive Foam Technologies Inc.
6753 Chestnut Ridge Rd.
Beach City, OH
44608
800.860.3626

Perma R Products Inc.
2604 Sunset Dr.
Grenada, MS
38901
106 Perma R Rd.
Johnson City, TN
37604
800.647.6130

Form Systems Inc.
330 Cain Drive
Haysville, KS
67060
888.838.5038

A PRODUCT BY
LOGIX BRANDS
LOGIXBRANDS.COM

CCMC# 14004-L
REV.022723